

# Building Digital Communities in the Humanities and Social Sciences

DHSI: HSSCommons  
Victoria 2023



*...Given your experience and expertise with digital research **infrastructure**, and previous discussions about research commons, we would like to invite you to speak at one of these aligned events...*

-prompt from Graham Jensen



LABO DE DONNÉES  
EN SCIENCES HUMAINES  
THE HUMANITIES DATA LAB

# Infrastructure: How can we think and use otherwise



A community not a commodity....

# Judith Quinlan and Ellen Woodsworth - CORA Bookmobile

To see related images visit

<https://biblio.uottawa.ca/atom/index.php/womens-liberation-bookmobile-fonds>

<https://riseupfeministarchive.ca/activism/issues-actions/cora-the-womans-liberation-bookmobile/>

# Using Infrastructure Otherwise

What is a bus for?

Who are the gas stations for?

What policies and collective action keep the roads in good repair?

... how to use existing infrastructure and put our time into developing new infrastructure and communities that aren't quite what our existing infrastructures expect?



## Graph Legend



3 Events



2 Places



1 Orgs



4 Titles

## When

1975-06 - 1975-08

## Description

Summer Ontario For the second summer in a row, Cora, a women's bookstore and resource centre on wheels, travelled around rural and small-town Ontario with the aim of helping women in smaller centres overcome isolation from the women's movement. In Orillia, the bookmobile was searched by police after a man complained it was distributing "pornography" such as *The Other Woman* and birth control and V.D. handbooks; no charges were laid.

## All Events

[May 1 Ontario Cora, a women's \[...\]](#)

## All Places

[Orillia](#)

[Ontario](#)

## All Organizations

[Ontario Provincial Police](#)

[Help](#)

[Report an Error](#)

# Building Infrastructure Otherwise

Constance Crompton

Public Profile :: Your profile is currently public.

+ Add Modules



Dashboard

Profile

Account

CV / Resume

Messages

13

Dashboard Introduction

Welcome to your customizable dashboard page!

To get started, click the "+ Add Modules" button at the top right of this page. You will see a selection of modules that you can install on your dashboard. To remove modules from your dashboard, simply click the "x" at the top-right corner of the module you wish to remove. You can also rearrange modules by selecting the dark grey bars at the top of the boxes and dragging them to a new location.

My Groups

Recent

All

DHSI 2023

approved

Digital Humanities in Practice

manager

Implementing New Knowledge Environments (INKE)

approved

+ New Group

My Questions

All Questions

+ New Question

Open Questions I Asked

No questions found.

hubzero



# Project Management Tools and Flows

## LGLC

Weekly editorial meeting

At least three-hour overlap in the lab

Planio for assignment tracking and how-to wiki

## Humanities Data Lab

Bi-monthly all-team meeting

Outreach activities, social events, conferences

## Project Management Tools

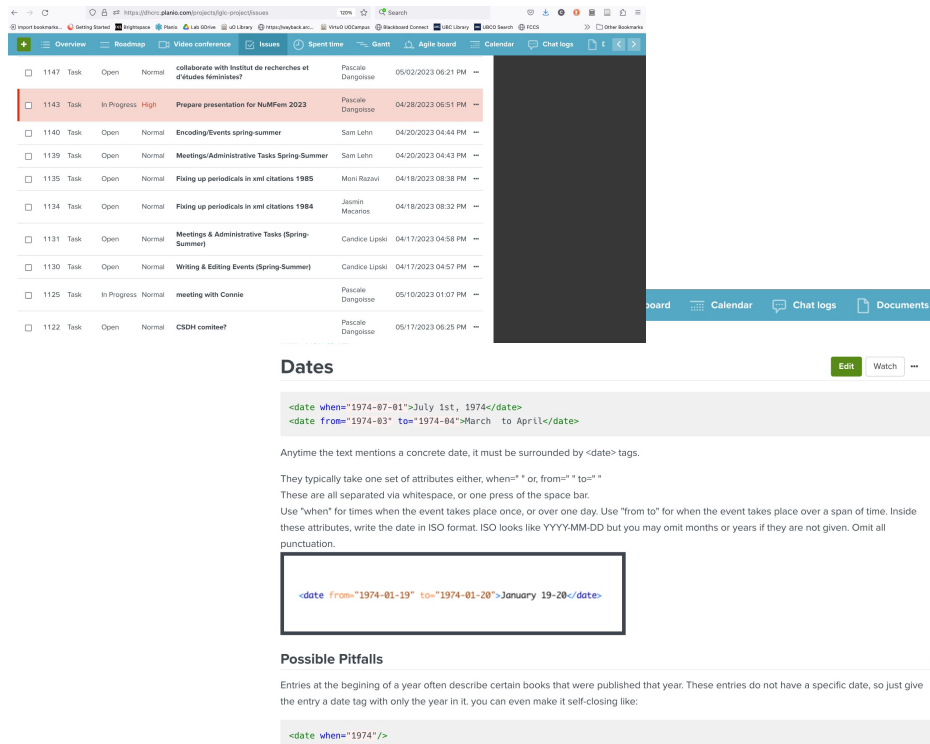
Planio: assignment tracking and how-to wiki

Google Drive: Authoring documents, meeting minutes

Oxygen Editor: TEI encoding

GitHub: Versioning, TEI storage, and exchange

... I might use HSSCommons if I were to start over



The screenshot shows a web browser displaying the Planio project management tool. The top navigation bar includes options like Overview, Roadmap, Video conference, Issues, Spent time, Gantt, Agile board, Calendar, Chat logs, and Documents. Below the navigation is a list of tasks with columns for status, priority, title, assignee, and due date. One task, 'Prepare presentation for NMFam 2023', is highlighted in orange. Below the task list is a 'Dates' section with a text input field containing the following TEI encoding examples:

```
<date when="1974-07-01">July 1st, 1974</date>
<date from="1974-03" to="1974-04">March to April</date>
```

Below the text input field is a paragraph of text explaining the use of the <date> tag in TEI encoding. It states that any concrete date must be surrounded by <date> tags and that they typically take one set of attributes either, when="" or, from="" to="". It also notes that these are all separated via whitespace, or one press of the space bar. The text further explains the use of "when" for times when the event takes place once, or over one day; "from" to" for when the event takes place over a span of time. Inside these attributes, the date is in ISO format. ISO looks like YYYY-MM-DD but you may omit months or years if they are not given. Omit all punctuation.

Below the paragraph is a text input field containing the following TEI encoding example:

```
<date from="1974-01-19" to="1974-01-20">January 19-20</date>
```

Below the text input field is a section titled 'Possible Pitfalls' with a paragraph of text explaining that entries at the beginning of a year often describe certain books that were published that year. These entries do not have a specific date, so just give the entry a date tag with only the year in it. You can even make it self-closing like:

```
<date when="1974"/>
```

# Using that Otherwise Infrastructure

HSS COMMONS

DISCOVER/DÉCOUVREZ

COMMUNITY/COMMUNAUTÉ

ABOUT/À PROPOS

ASSISTANCE

REPOSITORY/DÉPÔT



## Digital Humanities in Practice

Discoverability: Visible

Join Policy: Invite Only

Created: 01 Mar 2023

Getting started

5 collections

3 posts

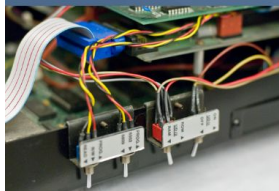
0 followers

Settings

"2 Tools and Techniques" 3 posts



Follow



Group Manager

Group ID: 1161

Overview

Members

31

Collections

5

Usage

New post

### Digital Differences...

Commenting with the data section also in mind, I find Campagnolo's mapping of a new understanding of digital representation, figured through a return to the ontological world of the predigital, intriguing: "...the understanding of library items considering their predigital nature, and the awareness of all research needs of library constituents foster, we believe, a new model for libraries in the digital world that tries to preserve the heterogeneity and granularity of original materials and

### Building the Web... and webs

Quoting Christian-Emil Ore in 1998, Øyvind Eide and Slavina Stoyanova open their chapter with a bon mot that holds today: "one might say that it is more common to publish one's work on the



# Keep in touch!

**email: [ccrompto@uottawa.ca](mailto:ccrompto@uottawa.ca) | web: [humanitiesdata.ca](http://humanitiesdata.ca) | insta: [@humanitiesdata](https://www.instagram.com/humanitiesdata)**

With thanks to Graham Jensen, Ray Siemens, Alyssa Arbuckle and the DHSI team, to Laura Estill and the INKE partnership members, to Heritage Canada, CFI, & the Social Sciences and Humanities Research Council of Canada